

AGREEMENT OF THE MEMBER STATE COMMITTEE

**ON THE IDENTIFICATION OF α,α -BIS[4-(DIMETHYLAMINO)PHENYL]-4
(PHENYLAMINO)NAPHTHALENE-1-METHANOL (C.I. SOLVENT BLUE 4)
[with $\geq 0.1\%$ of Michler's ketone (EC No. 202-027-5)
or Michler's base (EC No. 202-959-2)]**

AS A SUBSTANCE OF VERY HIGH CONCERN

**According to Articles 57 and 59 of
Regulation (EC) 1907/2006¹**

Adopted on 7 June 2012

This agreement concerns

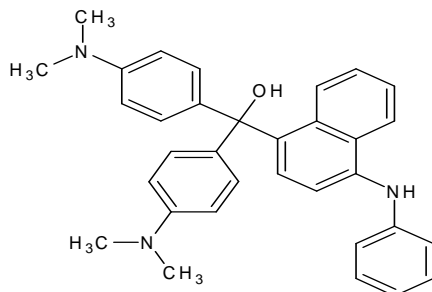
**Substance name: α,α -Bis[4-(dimethylamino)phenyl]-4
(phenylamino)naphthalene-1-methanol (C.I. Solvent
Blue 4)²**

EC number: 229-851-8

CAS number: 6786-83-0

Molecular formula: C₃₃ H₃₃ N₃ O

Structural formula:



¹Regulation (EC) No 1907/2006 of the European Parliament and of the Council of 18 December 2006 concerning the Registration, Evaluation, Authorisation and Restriction of Chemicals (REACH), establishing a European Chemicals Agency, amending Directive 1999/45/EC and repealing Council Regulation (EEC) No 793/93 and Commission Regulation (EC) No 1488/94 as well as Council Directive 76/769/EEC and Commission Directives 91/155/EEC, 93/67/EEC, 93/105/EC and 2000/21/EC

² The substance is identified as SVHC only where it contains Michler's ketone (EC Number: 202-027-5) or Michler's base (EC Number: 202-959-2) $\geq 0.1\%$ (wt/wt)

European Chemicals Agency on behalf of the European Commission presented a proposal in accordance with Article 59(3) and Annex XV of the REACH Regulation (24/02/2012, submission number CT010475-33) on identification of the *a,a-Bis[4-(dimethylamino)phenyl]-4 (phenylamino)naphthalene-1-methanol (C.I. Solvent Blue 4)* as a substance of very high concern due to its carcinogenic properties.

The Annex XV dossier was circulated to Member States on 27 February 2012 and the Annex XV report was made available to interested parties on the ECHA website on the same day according to Articles 59(3) and 59(4).

Comments were received by Member States and interested parties on the proposal.

The dossier was referred to the Member State Committee on 14 May 2012 and was discussed in the meeting on 6-8 June 2012 of the Member State Committee.

Agreement of the Member State Committee in accordance with Article 59(8):

a,a-Bis[4-(dimethylamino)phenyl]-4 (phenylamino)naphthalene-1-methanol (C.I. Solvent Blue 4) [with ≥ 0.1% of Michler's ketone (EC No. 202-027-5) or Michler's base (EC No. 202-959-2)] is identified as a substance meeting the criteria of Article 57 (a) of Regulation (EC) 1907/2006 (REACH) owing to its classification as carcinogen category 1B³. This classification corresponds to classification as carcinogen category 2⁴.

³ Classification in accordance with Regulation (EC) No 1272/2008 Annex VI, part 3, Table 3.1 List of harmonised classification and labelling of hazardous substances [as amended and adapted to technical and scientific progress by Commission Regulation (EC) No 790/2009, OJ No L 235, p. 1, 5.9.2009].

⁴ Classification in accordance with Regulation (EC) No 1272/2008, Annex VI, part 3, Table 3.2 List of harmonised classification and labelling of hazardous substances (from Annex I to Council Directive 67/548/EEC), [as amended and adapted to technical and scientific progress by Commission Regulation (EC) No 790/2009, OJ No L 235, p. 1, 5.9.2009]

UNDERLYING ARGUMENTATION FOR IDENTIFICATION OF SUBSTANCE OF VERY HIGH CONCERN

Carcinogenicity:

Michler's ketone (4,4'-bis(dimethylamino)benzophenone; EC Number: 202-027-5) is listed as Index number 606-073-00-0 in Regulation (EC) No 1272/2008 (the CLP Regulation) and classified in Annex VI, part 3, Table 3.1 (list of harmonised classification and labelling of hazardous substances) as carcinogen, Carc. 1B (H350: "May cause cancer.") The corresponding classification in Annex VI, part 3, Table 3.2 (the list of harmonised classification and labelling of hazardous substances from Annex I to Directive 67/548/EEC) of the CLP Regulation is carcinogen, Carc. Cat. 2, R45 ("May cause cancer.")

Michler's base (N,N,N',N'-tetramethyl-4,4'-methylenedianiline; EC Number: 202-959-2) is listed as Index number 612-201-00-6 in the CLP Regulation and classified in Annex VI, part 3, Table 3.1 as carcinogen, Carc. 1B (H350: "May cause cancer.") The corresponding classification in Annex VI, part 3, Table 3.2 of the CLP Regulation is carcinogen, Carc. Cat. 2, R45 ("May cause cancer.")

According to Article 10(1) of the CLP Regulation, specific concentration limits and generic concentration limits are limits assigned to a substance indicating a threshold at or above which the presence of that substance in another substance (or in a mixture) as an identified impurity, additive or individual constituent leads to the classification of the substance (or mixture) as hazardous.

For Michler's ketone and Michler's base no specific concentration limits are set in Annex VI of the CLP Regulation and therefore the generic concentration limit is to be used for the purpose of determining classification of substances (or mixtures) containing Michler's ketone and/or Michler's base. The generic concentration limit for carcinogens, Carc. 1B is 0.1%, as set out in Table 3.6.2 in Part 3 of Annex I to the CLP Regulation.

Therefore, the above classifications of Michler's ketone and Michler's base in Regulation (EC) No 1272/2008 show that where the substance α,α -Bis[4-(dimethylamino)phenyl]-4 (phenylamino)naphthalene-1-methanol (C.I. Solvent Blue 4) contains Michler's ketone or Michler's base $\geq 0.1\%$ it meets the criteria for classification as carcinogen in accordance with Article 57 (a) of REACH.

Reference:

1. Support Document *α,α -Bis[4-(dimethylamino)phenyl]-4 (phenylamino)naphthalene-1-methanol (C.I. Solvent Blue 4)*⁵ (Member State Committee, 7 June 2012)

⁵ The substance is identified as a SVHC only where it contains Michler's ketone (EC Number: 202-027-5) or Michler's base (EC Number: 202-959-2) $\geq 0.1\%$ (wt/wt)