

Substance Name: 6-methoxy-*m*-toluidine (*p*-cresidine)

EC Number: 204-419-1

CAS Number: 120-71-8

SUPPORT DOCUMENT FOR IDENTIFICATION OF

6-METHOXY-*M*-TOLUIDINE (*P*-CRESIDINE)

**AS A SUBSTANCE OF VERY HIGH CONCERN BECAUSE OF ITS
CMR¹ PROPERTIES**

¹ CMR means carcinogenic, mutagenic or toxic for reproduction

CONTENTS

1	IDENTITY OF THE SUBSTANCE AND PHYSICAL AND CHEMICAL PROPERTIES	5
1.1	NAME AND OTHER IDENTIFIERS OF THE SUBSTANCE	5
1.2	COMPOSITION OF THE SUBSTANCE	6
2	HARMONISED CLASSIFICATION AND LABELLING	7
3	ENVIRONMENTAL FATE PROPERTIES	8
4	HUMAN HEALTH HAZARD ASSESSMENT	8
5	ENVIRONMENTAL HAZARD ASSESSMENT	8
6	CONCLUSIONS ON THE SVHC PROPERTIES	8
6.1	CMR ASSESSMENT	8

TABLES

Table 1: Substance identity	5
Table 2: Constituents	6
Table 3: Classification according to part 3 of Annex VI, Table 3.1 ((list of harmonised classification and labelling of hazardous substances) of Regulation (EC) No 1272/2008	7
Table 4: Classification according to part 3 of Annex VI, Table 3.2 (list of harmonized classification and labelling of hazardous substances from Annex I of Council Directive 67/548/EEC) of Regulation (EC) No 1272/2008	7

Substance Name: 6-methoxy-*m*-toluidine

EC Number: 204-419-1

CAS number: 120-71-8

The substance is identified as substance meeting the criteria of Article 57 (a) of Regulation (EC) 1907/2006 (REACH) owing to its classification as carcinogen 1B² which corresponds to classification as carcinogen category 2³

Summary of how the substance meets the criteria set out in Article 57 (a) of REACH (Carc. 1B).

6-methoxy-*m*-toluidine is listed by Index number 612-209-00-X in Regulation (EC) No 1272/2008 and classified in Annex VI, part 3, Table 3.1 (list of harmonised classification and labelling of hazardous substances) as carcinogen, Carc. 1B (H350: "May cause cancer"). The corresponding classification in Annex VI, part 3, Table 3.2 (the list of harmonised classification and labelling of hazardous substances from Annex I to Directive 67/548/EEC) of Regulation (EC) No 1272/2008 is carcinogen, Carc. Cat. 2; R45 ("May cause cancer").

Therefore, this classification of 6-methoxy-*m*-toluidine in Regulation (EC) No 1272/2008 shows that the substance meets the criteria for classification as carcinogenic in accordance with Article 57 (a) of REACH.

Registration dossiers submitted for the substance? Yes

² Classification in accordance with Regulation (EC) No 1272/2008 Annex VI, part 3, Table 3.1 List of harmonised classification and labelling of hazardous substances.

³ Classification in accordance with Regulation (EC) No 1272/2008, Annex VI, part 3, Table 3.2 List of harmonised classification and labelling of hazardous substances (from Annex I to Council Directive 67/548/EEC).

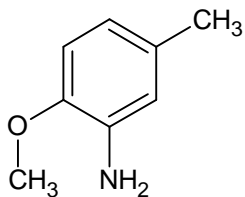
JUSTIFICATION

1 Identity of the substance and physical and chemical properties

1.1 Name and other identifiers of the substance

Table 1: Substance identity

EC number:	204-419-1
EC name:	6-methoxy- <i>m</i> -toluidine
CAS number (in the EC inventory):	120-71-8
CAS number: Deleted CAS numbers:	120-71-8 ---
CAS name:	Benzenamine, 2-methoxy-5-methyl-
IUPAC name:	2-Methoxy-5-methylaniline
Index number in Annex VI of the CLP Regulation	612-209-00-X
Molecular formula:	C ₈ H ₁₁ NO
Molecular weight:	137.2 g/mol
Synonyms:	Anisidine, 5-methyl-; 1-Amino-2-methoxy-5-methylbenzene; 2-Methoxy-5-methylaniline; 2-Methoxy-5-methylbenzenamine; 3-Amino-4-methoxytoluene; 3-Methyl-6-methoxyaniline; 4-Methyl-2-aminoanisole; 5-Methyl-2-methoxyaniline; 5-Methyl- <i>o</i> -anisidine; 6-Methoxy- <i>m</i> -toluidine; Cresidine; Krezidin; <i>m</i> -Amino- <i>p</i> -cresol methyl ether; <i>p</i> -Cresidine

Structural formula:**1.2 Composition of the substance****Name:** 6-methoxy-*m*-toluidine**Description:** ---**Degree of purity:** 98 -100 %**Table 2: Constituents**

Constituents	Typical concentration	Concentration range	Remarks
6-methoxy- <i>m</i> -toluidine 204-419-1		98 - 100 %	According to the information available in the registration dossiers

2 Harmonised classification and labelling

6-methoxy-*m*-toluidine is listed by Index number 612-209-00-X in Annex VI, part 3 of Regulation (EC) No 1272/2008 as follows:

Table 3: Classification according to part 3 of Annex VI, Table 3.1 ((list of harmonised classification and labelling of hazardous substances) of Regulation (EC) No 1272/2008

Index No	International Chemical Identification	EC No	CAS No	Classification		Labelling			Spec. Conc. Limits, M-factors	Notes
				Hazard Class and Category Code(s)	Hazard statement code(s)	Pictogram , Signal Word Code(s)	Hazard statement code(s)	Suppl. Hazard statement code(s)		
612-209-00-X	<i>p</i> -cresidine 6-methoxy- <i>m</i> -toluidine	204-419-1	120-71-8	Carc. 1B Acute Tox. 4 *	H350 H302	GHS08 GHS07 Dgr	H350 H302		-	

Table 4: Classification according to part 3 of Annex VI, Table 3.2 (list of harmonized classification and labelling of hazardous substances from Annex I of Council Directive 67/548/EEC) of Regulation (EC) No 1272/2008

Index No	International Chemical Identification	EC No	CAS No	Classification	Labelling	Concentration Limits	Notes
612-209-00-X	<i>p</i> -cresidine 6-methoxy- <i>m</i> -toluidine	204-419-1	120-71-8	Carc. Cat. 2; R45 Xn; R22	T R: 45-22 S: 53-45	-	E

3 Environmental fate properties

Not relevant for the identification of the substance as SVHC in accordance with Article 57a.

4 Human health hazard assessment

See section 2 on harmonised classification and labelling.

5 Environmental hazard assessment

Not relevant for the identification of the substance as SVHC in accordance with Article 57a.

6 Conclusions on the SVHC Properties

6.1 CMR assessment

6-methoxy-*m*-toluidine is listed by Index number 612-209-00-X in Regulation (EC) No 1272/2008 and classified in Annex VI, part 3, Table 3.1 (list of harmonised classification and labelling of hazardous substances) as carcinogen, Carc. 1B (H350: "May cause cancer"). The corresponding classification in Annex VI, part 3, Table 3.2 (the list of harmonised classification and labelling of hazardous substances from Annex I to Directive 67/548/EEC) of Regulation (EC) No 1272/2008 is carcinogen, Carc. Cat. 2; R45 ("May cause cancer").

Therefore, this classification of 6-methoxy-*m*-toluidine in Regulation (EC) No 1272/2008 shows that the substance meets the criteria for classification as carcinogenic in accordance with Article 57 (a) of REACH.