

REACH 2018

webinars

Last minute advice for registrants

Introduction

8 March 2018

11.00 – 12.00 Helsinki time

Alexis Quintana-Sáinz, ECHA





Agenda

- 11:00 – 11:05 **Introduction**
Alexis QUINTANA-SÁINZ, ECHA
- 11:05 – 11:25 **Before submitting your dossier**
István MÁK, ECHA
- 11:25 – 11:35 **Essential information
for a successful registration**
Kristina LAITINEN, ECHA
- 11:35 – 11:45 **Invoicing and payments**
Anita ETHOLEN, ECHA
- 11:45 – 11:55 **Protect your confidential data**
Éva MÁK, ECHA
- 11:55 – 12:00 **Take home messages**
Alexis QUINTANA-SÁINZ
- 12:00 – 13:00 Time reserved for answering remaining questions



Q&A panel

Agenda

- 11.00 - 11.05 Introduction to the webinar
Heidi Rasikari
- 11.05 - 11.15 Poison Centres project - where are we?
Mercedes Vinas
- 11.15 - 11.30 Feasibility study for the central Poison Centres Notification portal
Amandine Jamier
- 11.30 - 11.50 Support for industry
Blanca Serrano Ramon - Cefic
- 11.50 - 12.00 Time reserved for answering remaining questions

Q&A

- Send questions about the presentations
- Send messages if you have any technical difficulties

Q&A

All (0)

Ask: All Panelists

Type in your questions here

Send

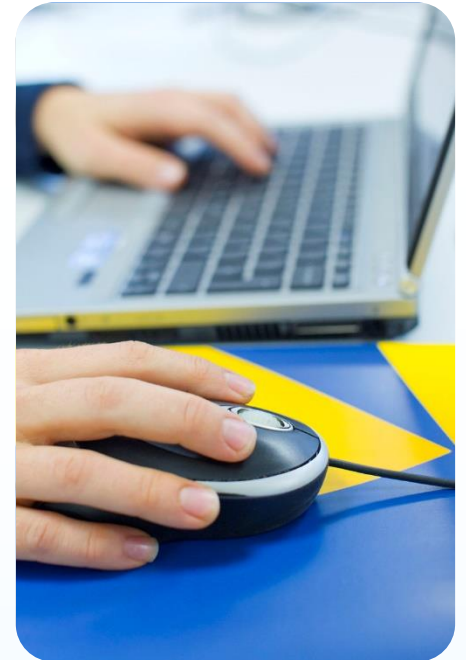
Connected



REACH 2018

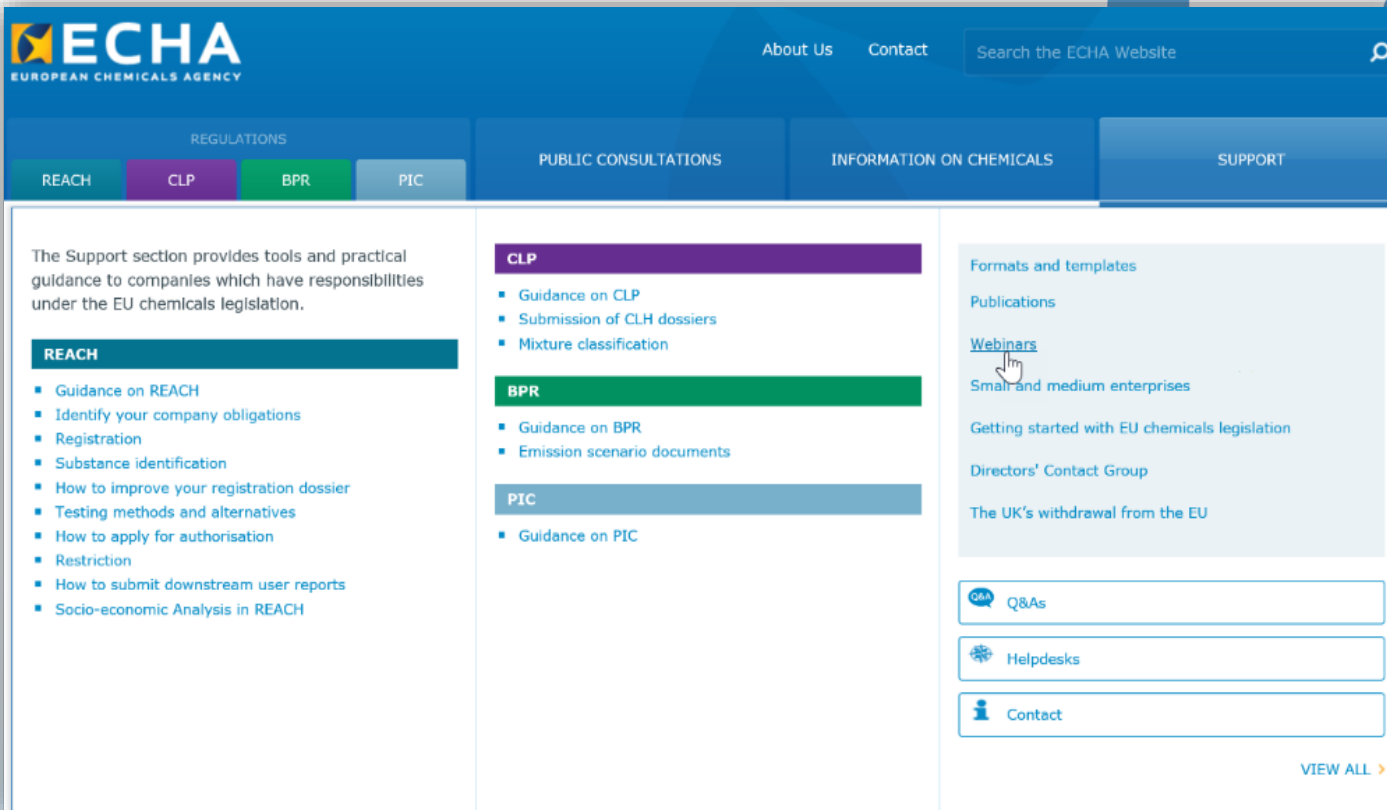
Q&A

- Submit your questions at any time - we will answer as many as possible
- Avoid confidential information
- Question not answered by the end of the webinar? Send it to your National Helpdesk or to us: echa.europa.eu/contact



Webinar recording published in YouTube: [Youtube.com/EUchemicals](https://www.youtube.com/EUchemicals)

Material from previous webinars:



The screenshot displays the ECHA website's 'Support' section. The top navigation bar includes 'About Us', 'Contact', and a search box. Below this, there are four main navigation tabs: 'REGULATIONS', 'PUBLIC CONSULTATIONS', 'INFORMATION ON CHEMICALS', and 'SUPPORT'. The 'SUPPORT' tab is active, showing a list of resources. On the left, there is a sidebar with 'REACH' selected, listing various guidance documents. The main content area features three columns: 'CLP' (Guidance on CLP, Submission of CLH dossiers, Mixture classification), 'BPR' (Guidance on BPR, Emission scenario documents), and 'PIC' (Guidance on PIC). A right-hand sidebar contains 'Formats and templates', 'Publications', and 'Webinars' (highlighted with a mouse cursor). Below these are 'Small and medium enterprises', 'Getting started with EU chemicals legislation', 'Directors' Contact Group', and 'The UK's withdrawal from the EU'. At the bottom right, there are buttons for 'Q&As', 'Helpdesks', and 'Contact', followed by a 'VIEW ALL >' link.

