

**Member of the
Committee for Socio-economic Assessment (SEAC)**

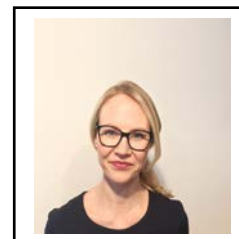
1. General Information:

Name (FAMILY NAME, First Name): JANS, Jenny

Ms / Mr

Appointed by (MS/Forum): Sweden

Nationality: Swedish



2. Education:

- **Ph.D. in Economics.** Uppsala University, Sweden 2011-2017
- **Visiting Scholar,** Columbia University, US, Academic Year 2013-2014
- **Master in Economics,** Stockholm University, Sweden 2009- 2011
- **Exchange studies,** University of Glasgow. Fall 2010
- **Bachelor** program in Mathematics, Mathematical Statistics and Economics, Stockholm University 2006-2009

3. Relevant Employment

Present employment	<i>The Swedish Chemical Agency</i>
Relevant previous employment	<ul style="list-style-type: none">• <i>Post doc at the Department of Statistics, Uppsala University 2017-2018</i>• <i>Non-life Actuary at Folksam 2015-2016</i>

4. Relevant fields of in-depth expertise:

Area of expertise	Description
Applied econometrics	With a focus on topics in health, environmental, and labour economics with an emphasis on estimating causal effects.
Economics	
Statistics	

5. Membership of relevant professional bodies:

6. Relevant Publications:

Jans, J., Johansson, P. and J. P Nilsson, 2018. "Economic status, air quality, and child health: Evidence from inversion episodes", *Journal of Health Economics*, Volume 61, <https://doi.org/10.1016/j.jhealeco.2018.08.002>.